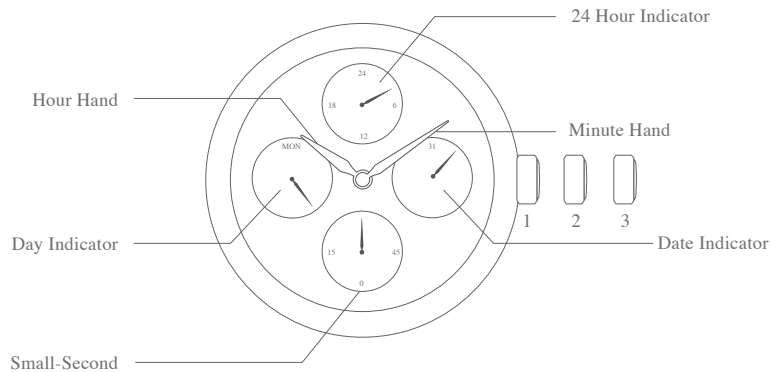
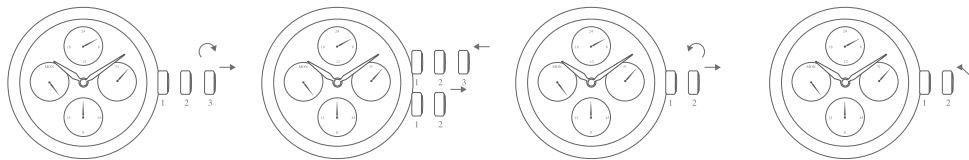


JAPAN QUARTZ 2 HANDS MULTIFUNCTION
(SMALL SECOND, DAY, DATE AND 24H INDICATOR)

A) DISPLAY



B) TIME SETTING



1. Pull the crown out to **position 3** when the small second hand is at the 12 o'clock position.
It will stop on the spot and advance the hour and minute hands by turning the crown.
Set the day by rotating the hour and minute hands clockwise. (Check that 24-hour hand is set correctly).
2. Push the crown back in to **position 1** in signal.
Pull out the crown out to **position 2**.
3. Set the date by rotating the crown in counter-clockwise direction (Quick change function).
4. Push the crown back in to **position 1**.

NOTE:

Do not set the date between 10:00 PM and 1:00 AM

Otherwise, the date may not change properly.

If it is necessary to set the date during that time period, change the time to any time outside of it, set the date and then reset it to the correct time.